

ePowerSwitch 4 Guard



ePowerSwitch 4G is a power distribution and control unit that enables remote power control of 4 devices over Intranet, Internet or locally through an RS-232 serial connection. It also enables you to monitor 4 IP devices (servers, routers, cameras...) and automatically reboot them in case of lock-up.

On, off and restart functions

Each power outlet can be turned On/Off or restarted over IP or through an RS-232 serial connection.

IP Device Monitoring

The Watchdog function lets you monitor up to 4 IP devices with specific services or ports (server, router, camera...). In case of lock-up of the monitored device, this one can be automatically rebooted.

IP Security

Two levels of password: the administrator password allows configuration and access to all power outlets and 4 user passwords allow access only to the power outlets for which the user has the rights.

4 security masks allow you to grant or deny access to only a specific IP address or a group of IP addresses.

Restart Delay

The restart delays of the power outlets can be set individually between 5 and 60 seconds.

Sequential power up/down

Avoids the risk for a power inrush to blow a fuse or circuit breaker in the data centre.

Programmable labels

To avoid confusion during operation, you can attribute a 32-character label to each device and power outlet.

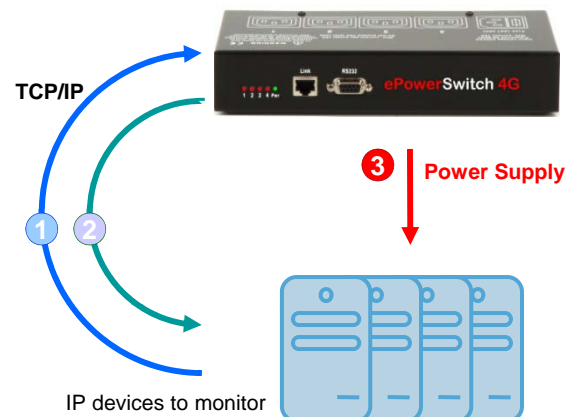
Configuration

The configuration can be done through a standard web browser, a serial console interface or a convenient Windows tool which provides an easy and quick way to configure your ePowerSwitch especially by the first settings of the Network parameters.



The Watchdog function

- 1 ePowerSwitch sends a Ping / Scan request.
- 2 The monitored device acknowledges the request.
- 3 The monitored device is automatically rebooted in case of lock-up.

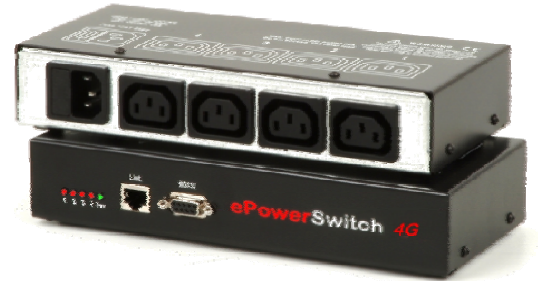


ePowerSwitch 4G Guard



Benefits

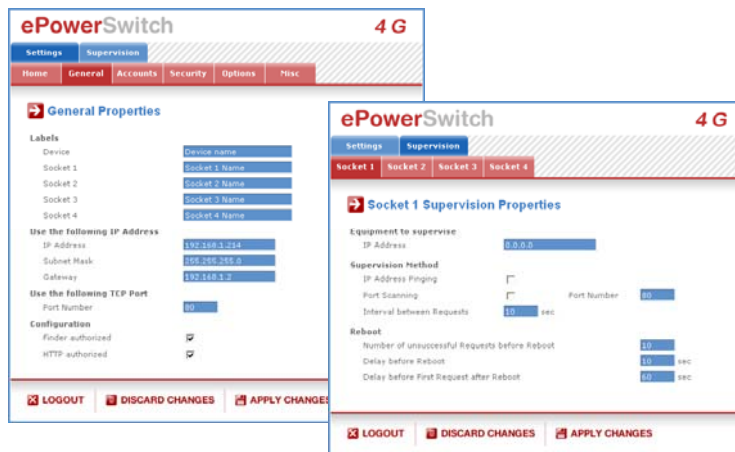
- Remote power control of 4 outlets.
- Remote control and administration over IP and RS-232.
- Monitoring of 4 IP devices and automatic reboot function in case of lock-up.
- Access protected by names and passwords (1 administrator and 4 user accounts).
- Power-up sequencing avoids in-rushes currents at start-up.
- Free definable labels for the device and each power outlet.
- Easy and fast configuration.
- Very compact metallic case, rackable with RMK-4 kit (in option)
- Status LEDs for power input, network and power outlets.
- Firmware updateable over the LAN.



Front side / Back
A series of front-panel LEDs provide quick status view.

Web Pages

The settings for the Web Server and the control of the power outlets are organized by an easy to use set of tabs.



What's included

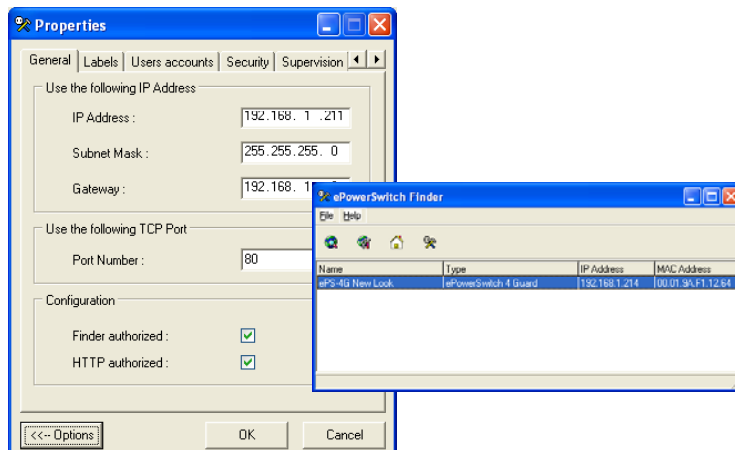
- ▶ 1 EPS 4G-XX (XX specifies the delivered power cable)
 - ▶ 1 power cable, 1,80 meter IEC-320-C13 / EU, CH or UK standard
EU = Schuko/Europe, CH = Swiss, UK = United Kingdom
- ▶ 1 serial cable (SUB-D9 male/female) 1,80 meter
- ▶ 1 CD-ROM with user guide in English and Windows IP configuration tool

Technical features

- ▶ 1 power input: IEC 320 EN 60320 C14 (M) 10 A
 - ▶ Nominal input voltage: 230 V/50Hz
 - ▶ Maximum current: 10A
- ▶ 4 power outputs: IEC 320 EN 60320 C13 (F)
 - ▶ Output voltage: 230 V/50Hz
 - ▶ Maximum current/outlet: 10A
- ▶ Network standards: IEEE 802.3, 10BASE-T
 - ▶ Network protocols: TCP/IP, HTTP
 - ▶ Network connection: RJ-45 for UTP CAT5
- ▶ Max.network cable length: 100 m (not included)
- ▶ Terminal connection: RS-232, SUB-D 9 female
 - ▶ Connection Bus: RS-485, RJ-45
- ▶ LED's: power and network traffic socket status
- ▶ Operating temperature: 0°C to + 40°C
 - ▶ Operating humidity: 10% to 80%
 - ▶ Dimensions: 230 x 112x 42mm
 - ▶ Weight: 1 kg
- ▶ Approvals: CE, EN55022 & EN55024, RoHS
- ▶ Guarantee: 2 years repair or replace

Windows configuration tool

This convenient Windows program provides an easy and quick way to configure your ePowerSwitch especially by the first settings of the Network parameters.



Distributor :

All modifications reserved
EPS-4G Datasheet: 2009 08